

# Wolfgang K.



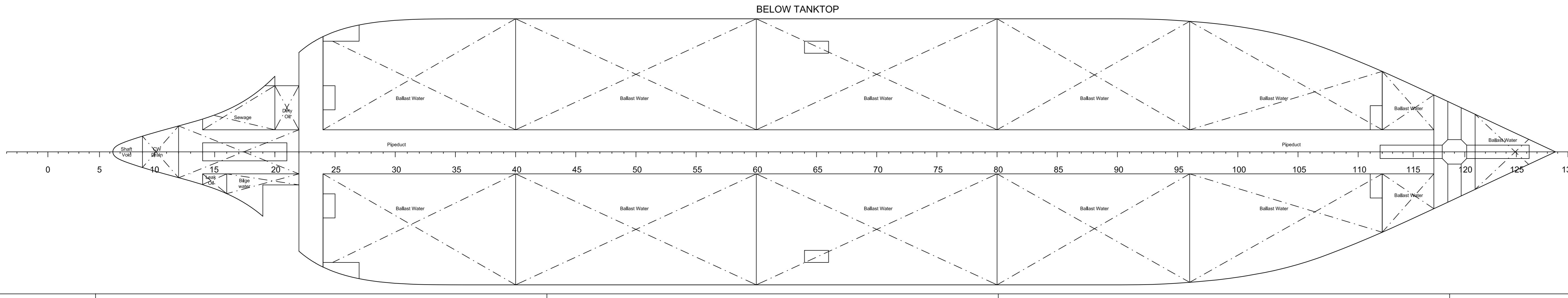
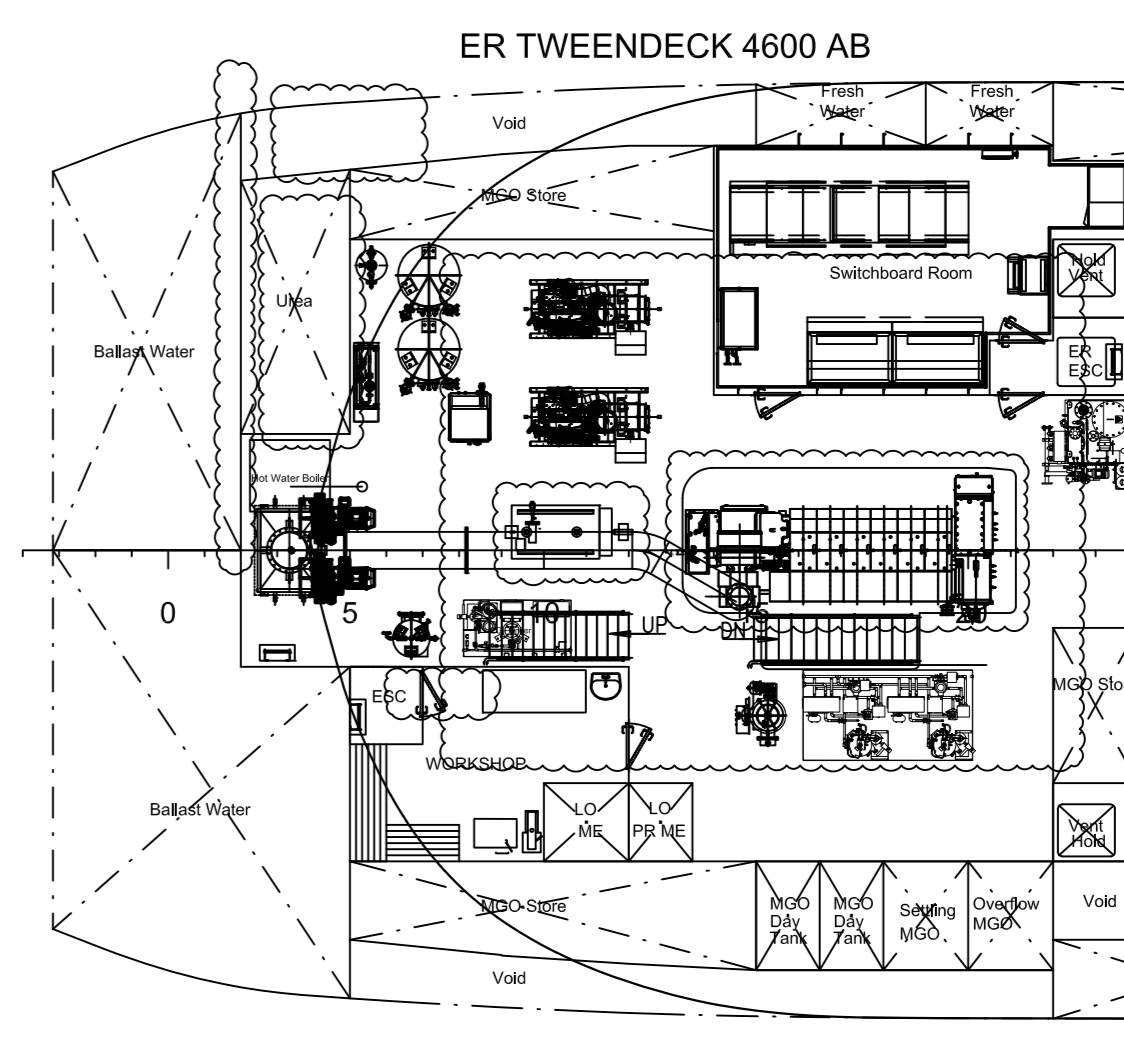
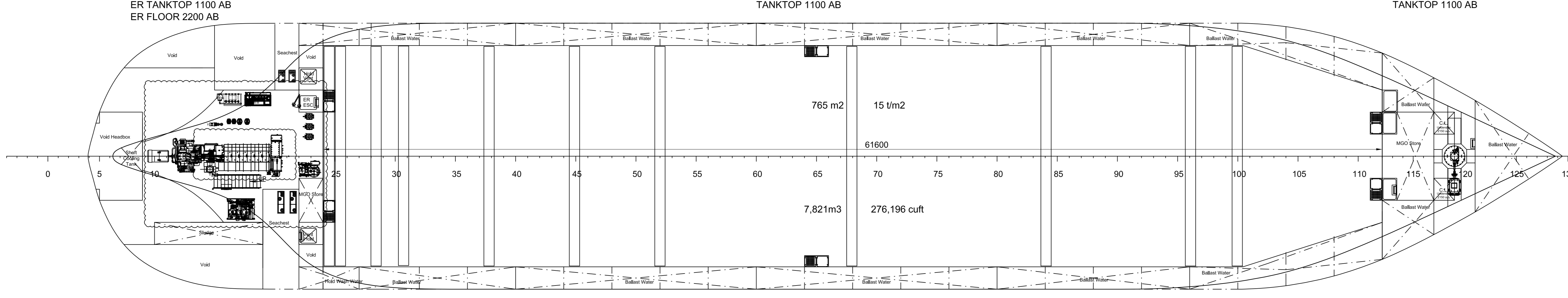
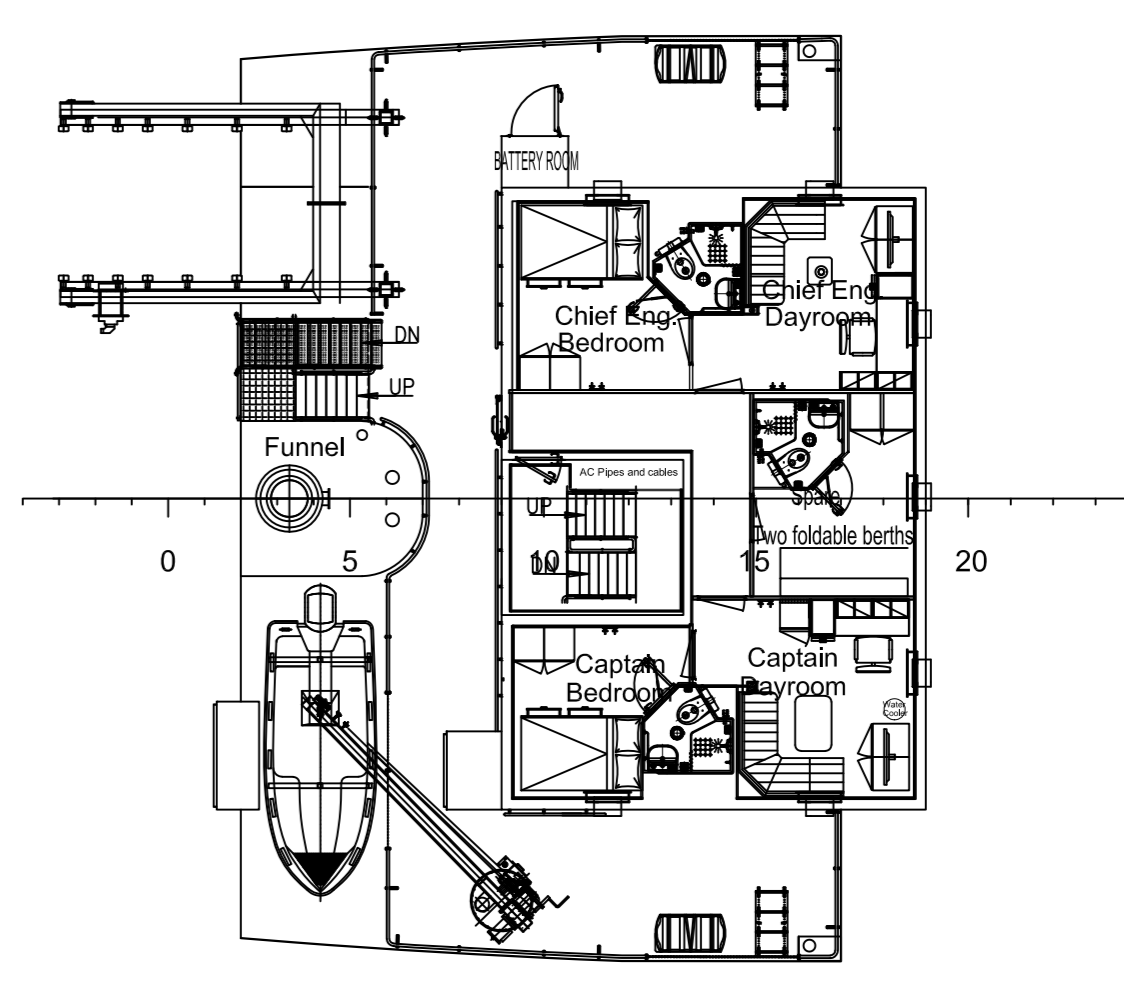
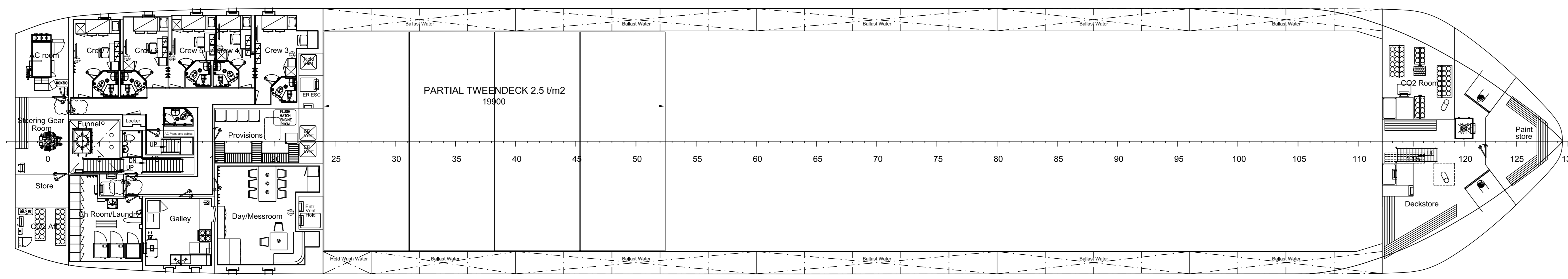
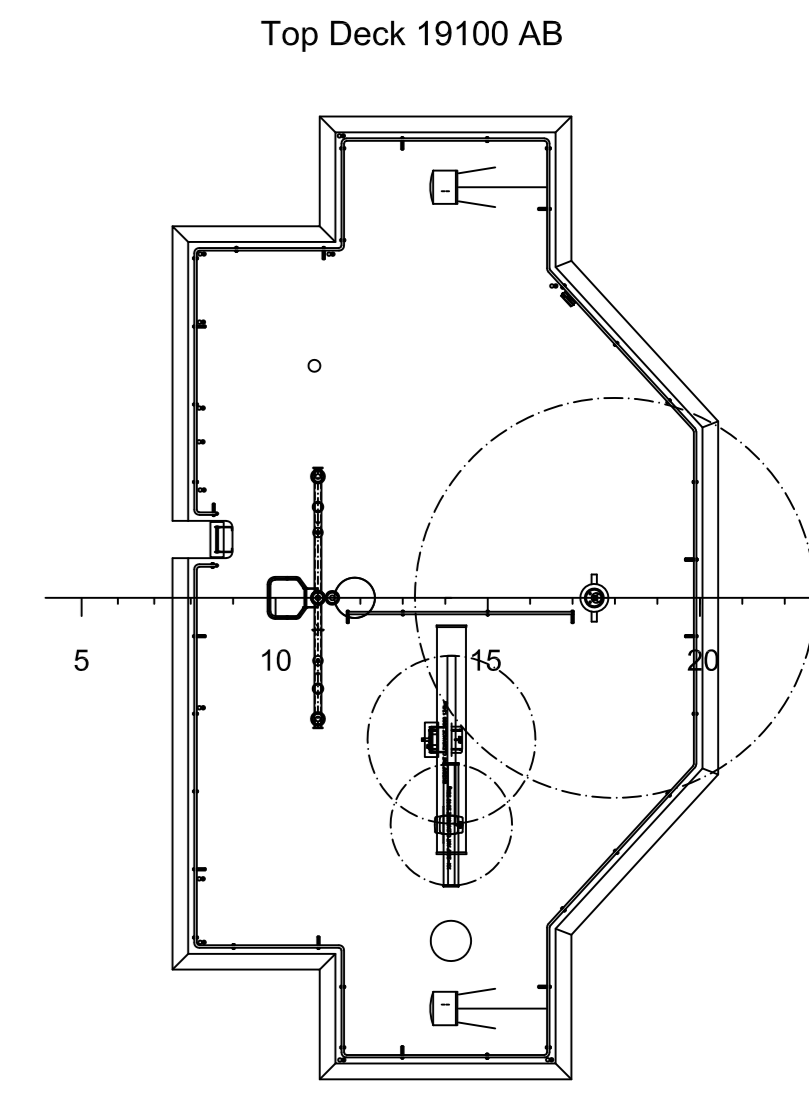
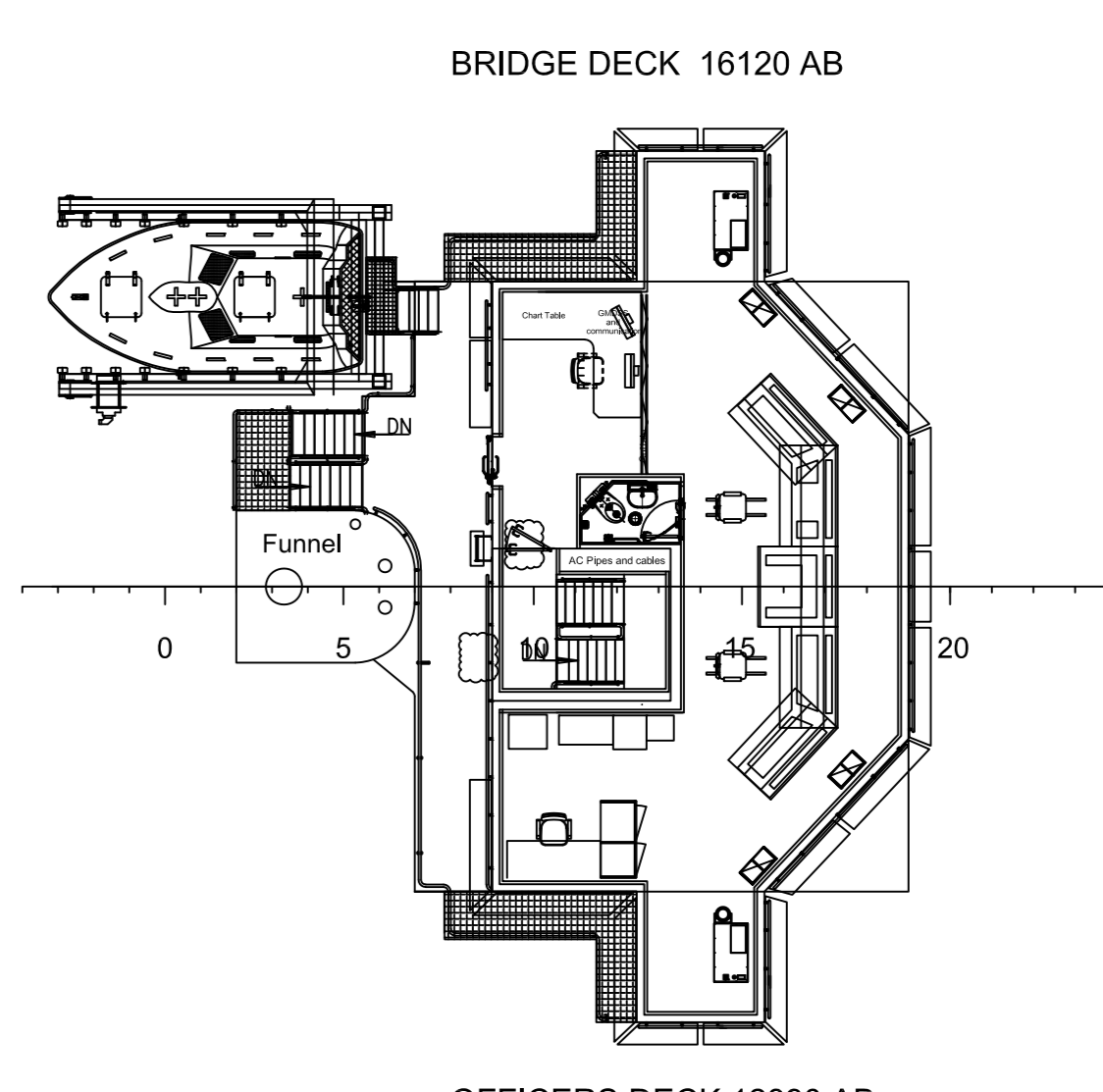
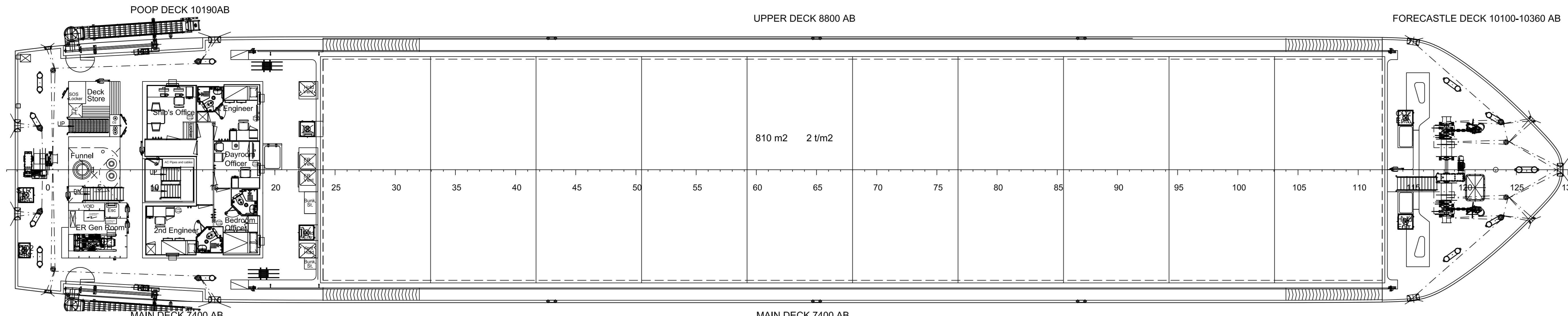
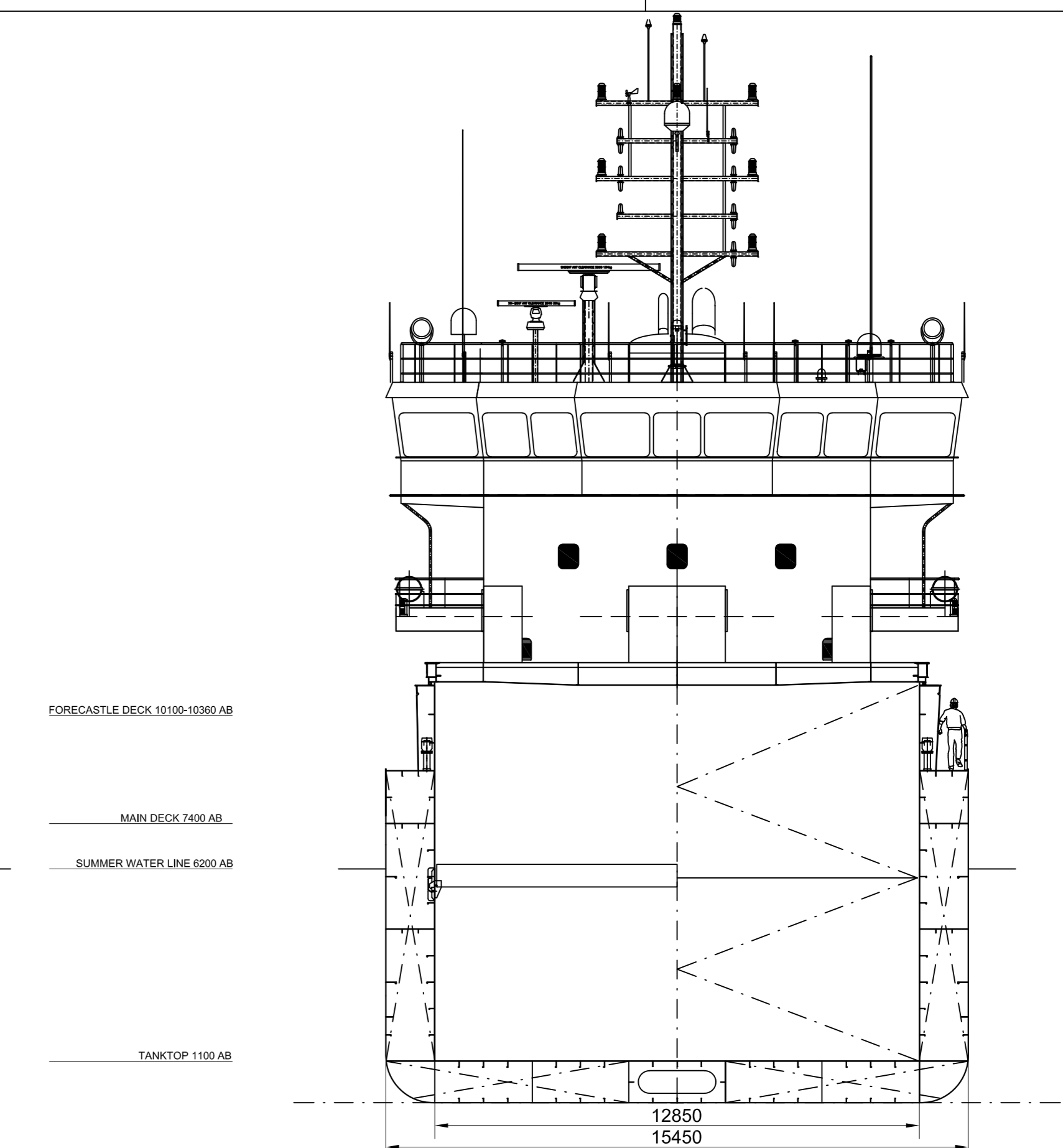
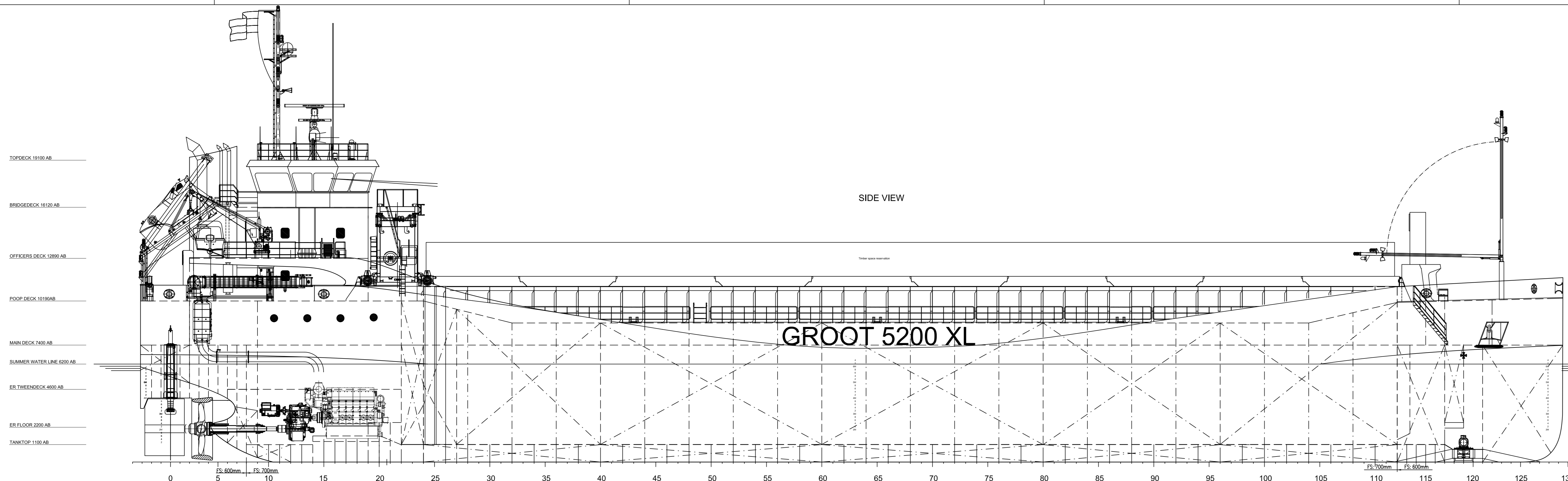
Bereederungsgesellschaft  
Alstership



Type	Boxshaped Singledecker	IMO number	1112460
DWAT	5200 mtons sfb	Call sign	PBSQ
DWCC	5000 mtons sfb	Flag	Dutch
Cubic	270.000 cbft grain	Port of registry	Delfzijl
Hatch - 1 (LxB)	63,00 x 13,32 m	Delivery	04/2026
Hatchcovertype	Pontoons (10)	Yard	Jiangsu Dajin Heavy Industry
Hold - 1 (LxBxH)	61,60 x 12,85 x 9,75 m	Classification Society	Bureau Veritas
Hold Ventilation	6 air changes per hour	P&I Club	Hydor
Tanktop	Steel - 15,0 mtons/sqm	H&M Insurers	Kravag
Bulkheads	2 with 10 positions	Engine	MAN 6L 27/38
GT / NT	3961/ 1923	Power	2.100 kw
LOA / Beam	89,98 / 15,45m	Auxiliary Engines	2x 129kw
Draft - fully laden	6,20 m sfb	Shaft Generator	Yes
Airdraft fore - in ballast	11,25 m	Bowthruster	300 kw
Distance WL to HC	7,15 m	Rudder	Spade
Speed	abt. 12,0 knots	Propeller	CPP

*All details are 'about' and believed to be correct but without guarantee*

[www.b-as.de](http://www.b-as.de)



**General particulars**

Length over all	89,98 m
Length between perpendiculars	88,065 m
Breadth moulded	15,45 m
Depth to weather deck	8,80 m
Depth to maindeck moulded	7,40 m
Draught summer	6,20 m
Deadweight summer (approx.)	5200 t
Gross Tonnage (approx.)	3952 GT
Net Tonnage (approx.)	1923 NT
Hold capacity (approx.)	276196 cuft
	7821 m3
Main engine MCR (approx.)	2100 kW
Crew	10+2

GROOT SHIP DESIGN		Lorentzpark 3A 9351 VJ Leek The Netherlands	
Scale:	1:125	GSD No.:	P21013G3-000-002
Drawn:		Date:	17-02-25
Checked:		Date:	17-02-25
Client:			
Title:	GENERAL ARRANGEMENT PLAN		
Drawing No.:	P21013G3-000-002	Sh.:	1/1
		Rev.:	B

Note: The vessel is repeating vessel for D41740 and changed as marked in cloud