

# KARL-JAKOB K.



Bereederungsgesellschaft  
Alstership

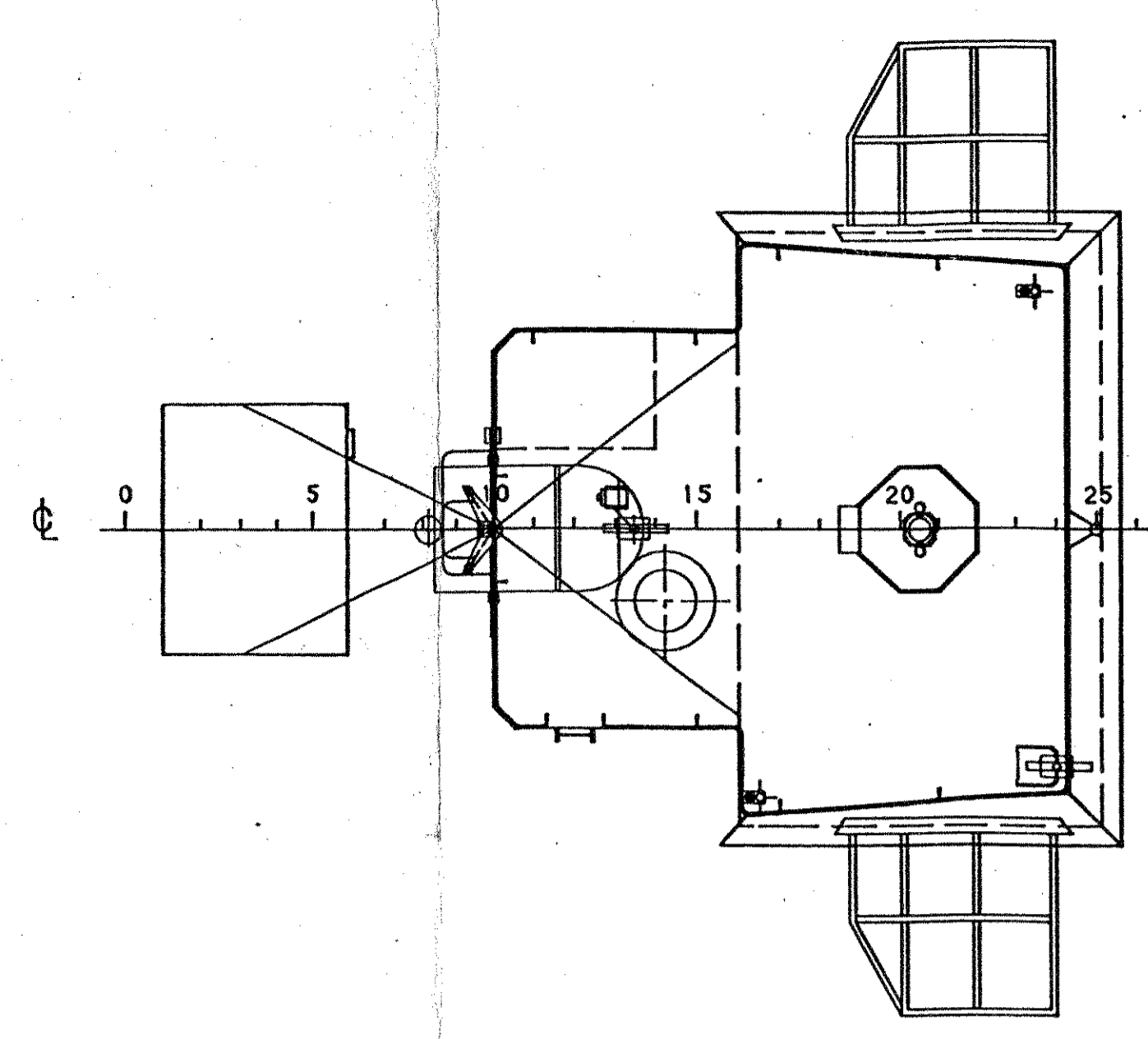


|                       |                        |                        |                        |
|-----------------------|------------------------|------------------------|------------------------|
| Type                  | Boxshaped Singledecker | IMO number             | 9344409                |
| DWAT                  | 4247 mtons sfb         | Call sign              | PIAD                   |
| DWCC                  | 4000 mtons sfb         | Flag                   | Dutch                  |
| Cubic                 | 196.700 cbft grain     | Port of registry       | Delfzijl               |
| Hatch - 1 (LxB)       | 52,65 x 12,80 m        | Built                  | 01/2006                |
| Hatchcovertype        | Pontoons (10)          | Yard                   | Rousse Shipyard        |
| Hold - 1 (LxBxH)      | 56,80 x 12,80 x 8,00 m | Classification Society | Bureau Veritas         |
| Hold Ventilation      | 6 air changes per hour | P&I Club               | Hydor AS               |
| Tanktop               | Steel - 15,0 mtons/sqm | H&M Insurers           | KRAVAG-LOGISTIC        |
| Bulkheads             | 2 with 5 positions     | Engine                 | MAK 8M25               |
| GT / NT               | 3057 / 1516            | Power                  | 2400 kW                |
| LOA / Beam            | 90,25 / 15,20 m        | Auxiliary Engines      | 1 x 85 kW & 2 x 239 kW |
| Draft - fully laden   | 5,64 m sfb             | Shaft Generator        | Yes                    |
| Airdraft - in ballast | 23,00 m                | Bowthruster            | 220 kW                 |
| Distance WL to HC     | 5,50 m                 | Rudder                 | Spade                  |
| Speed                 | abt. 10,0 knots        | Propeller              | CPP                    |

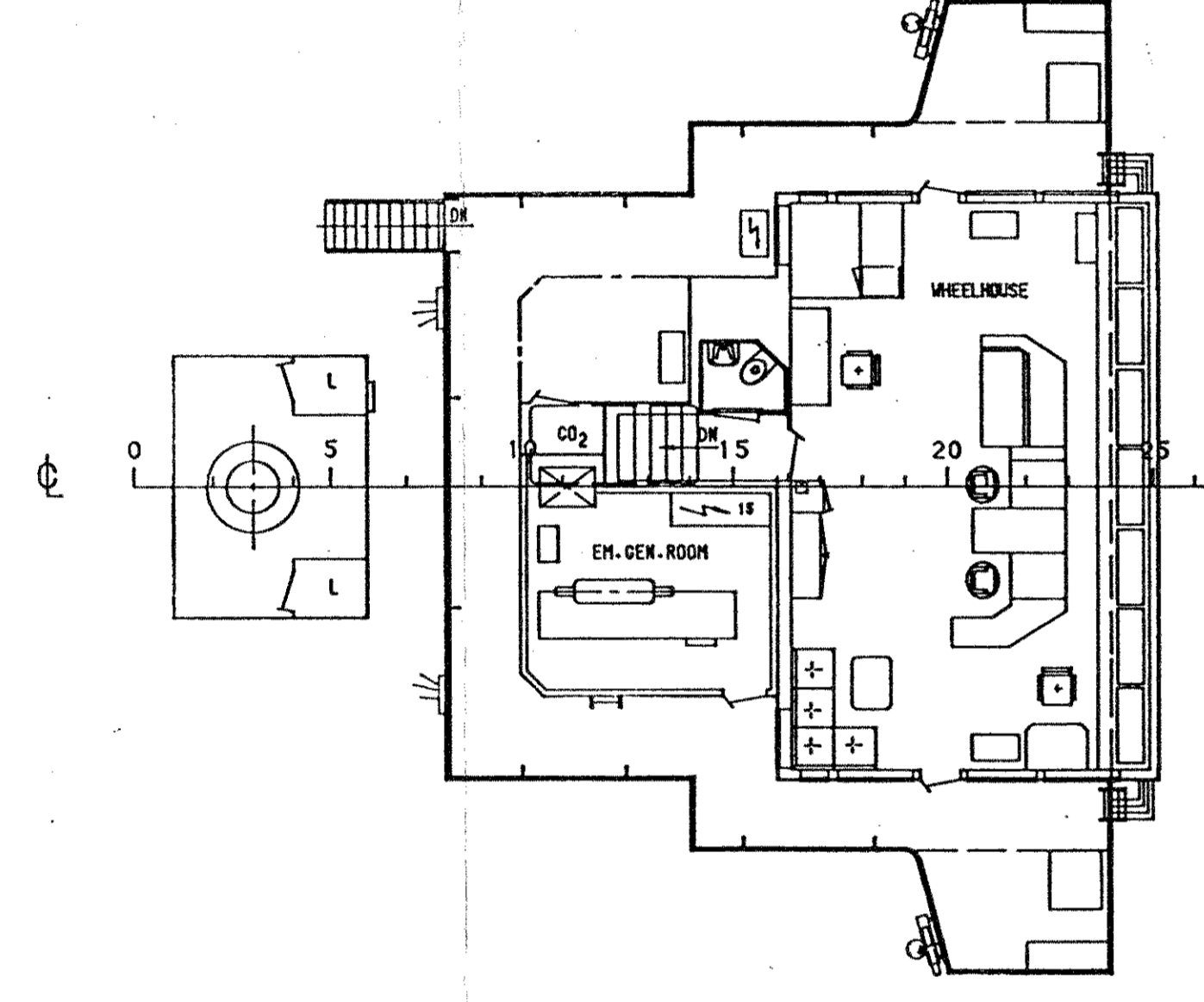
*All details are 'about' and believed to be correct but without guarantee*

|         |         |         |
|---------|---------|---------|
| Имя     | Имя     | Имя     |
| Фамилия | Фамилия | Фамилия |
| Подпись | Подпись | Подпись |
| Дата    | Дата    | Дата    |

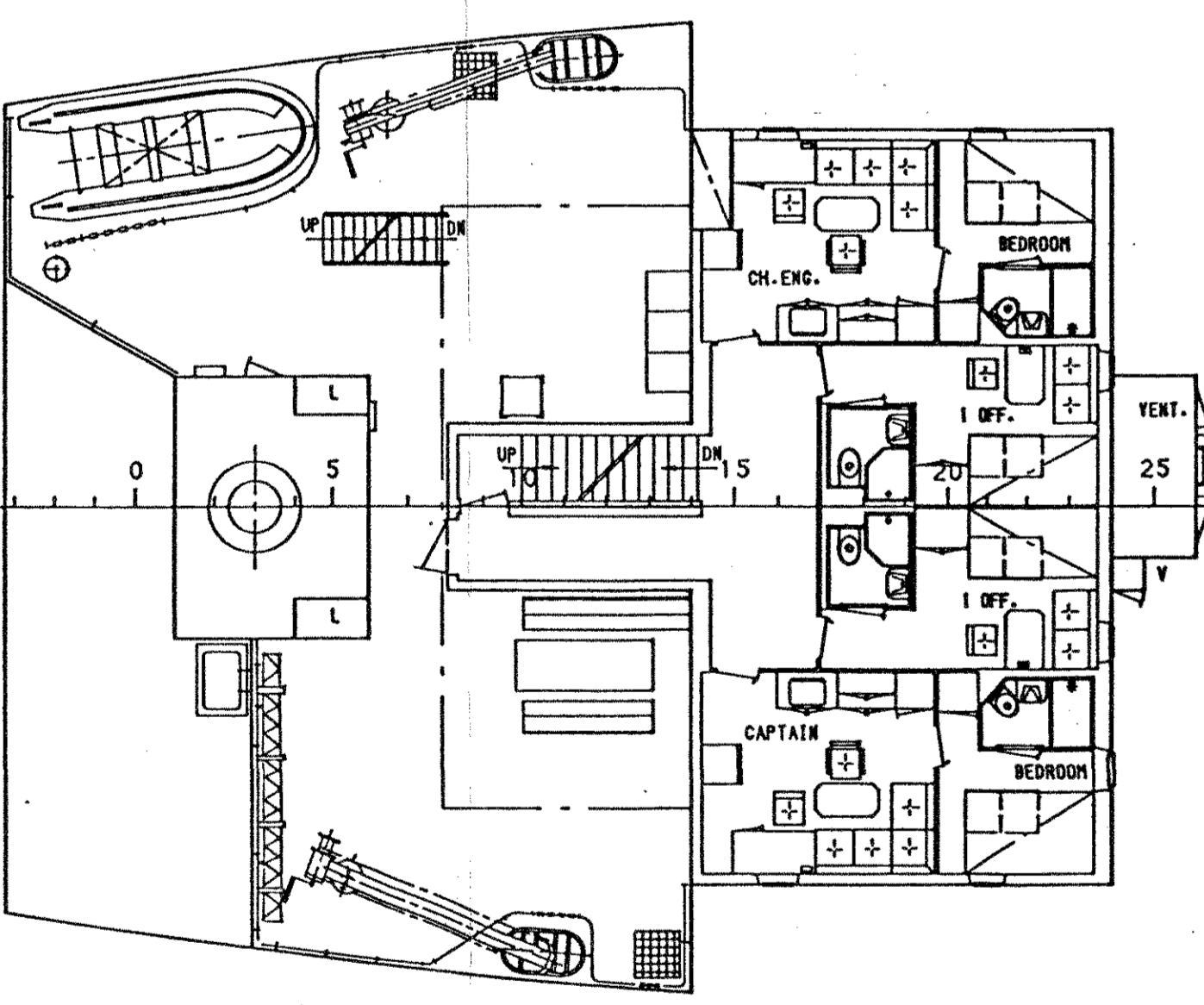
BRIDGE TOP



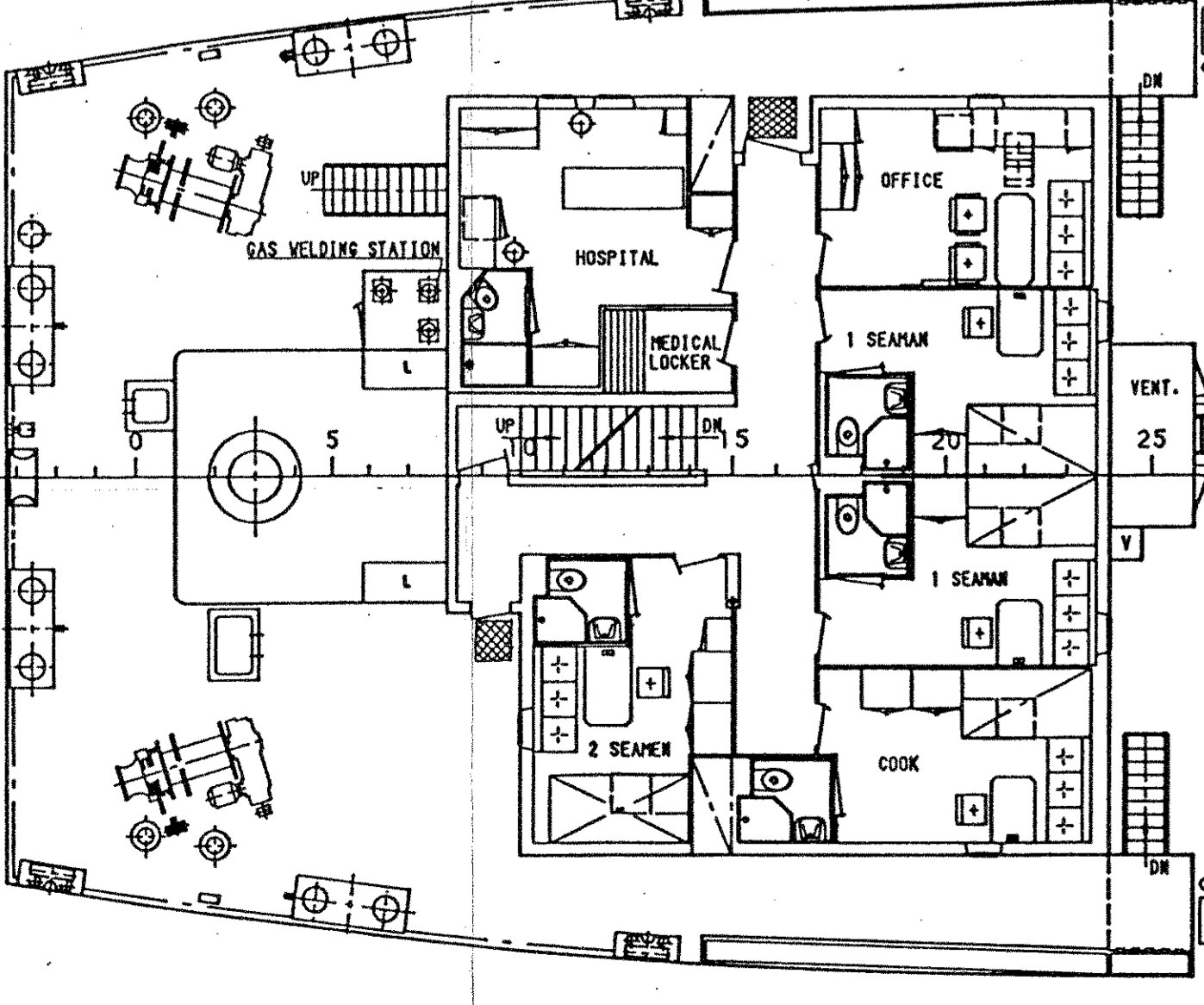
BRIDGE DECK



2<sup>nd</sup> POOP DECK



1<sup>st</sup> POOP DECK



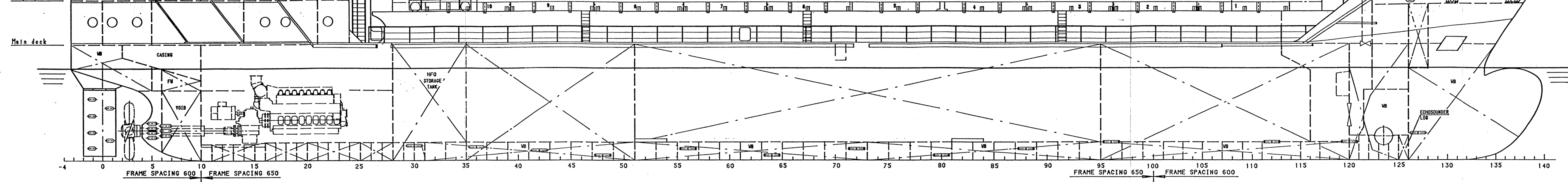
Bridge top

Bridge deck

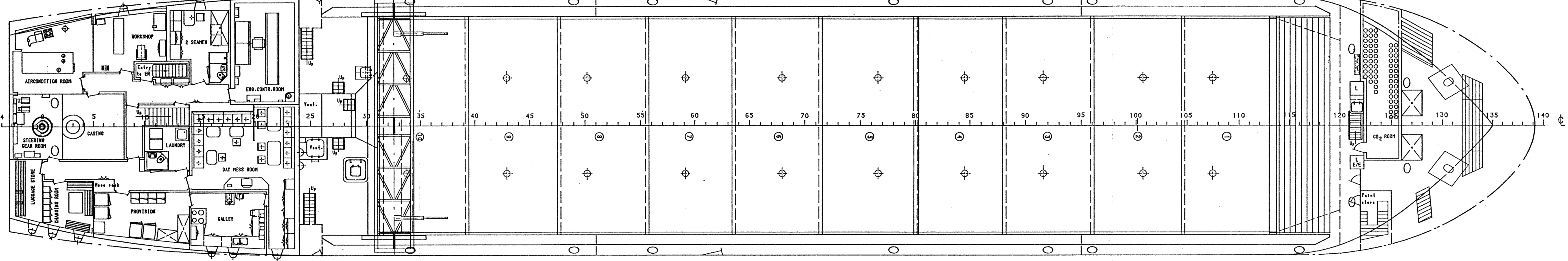
2<sup>nd</sup> poop deck

1<sup>st</sup> poop deck

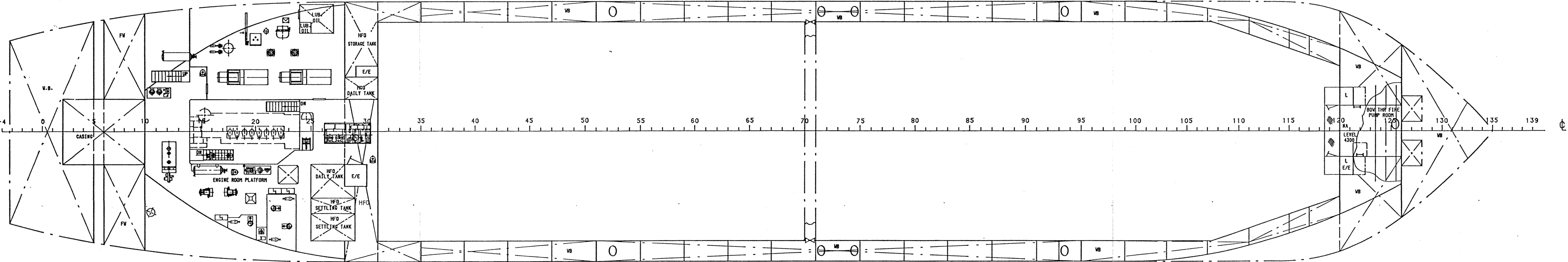
Main deck



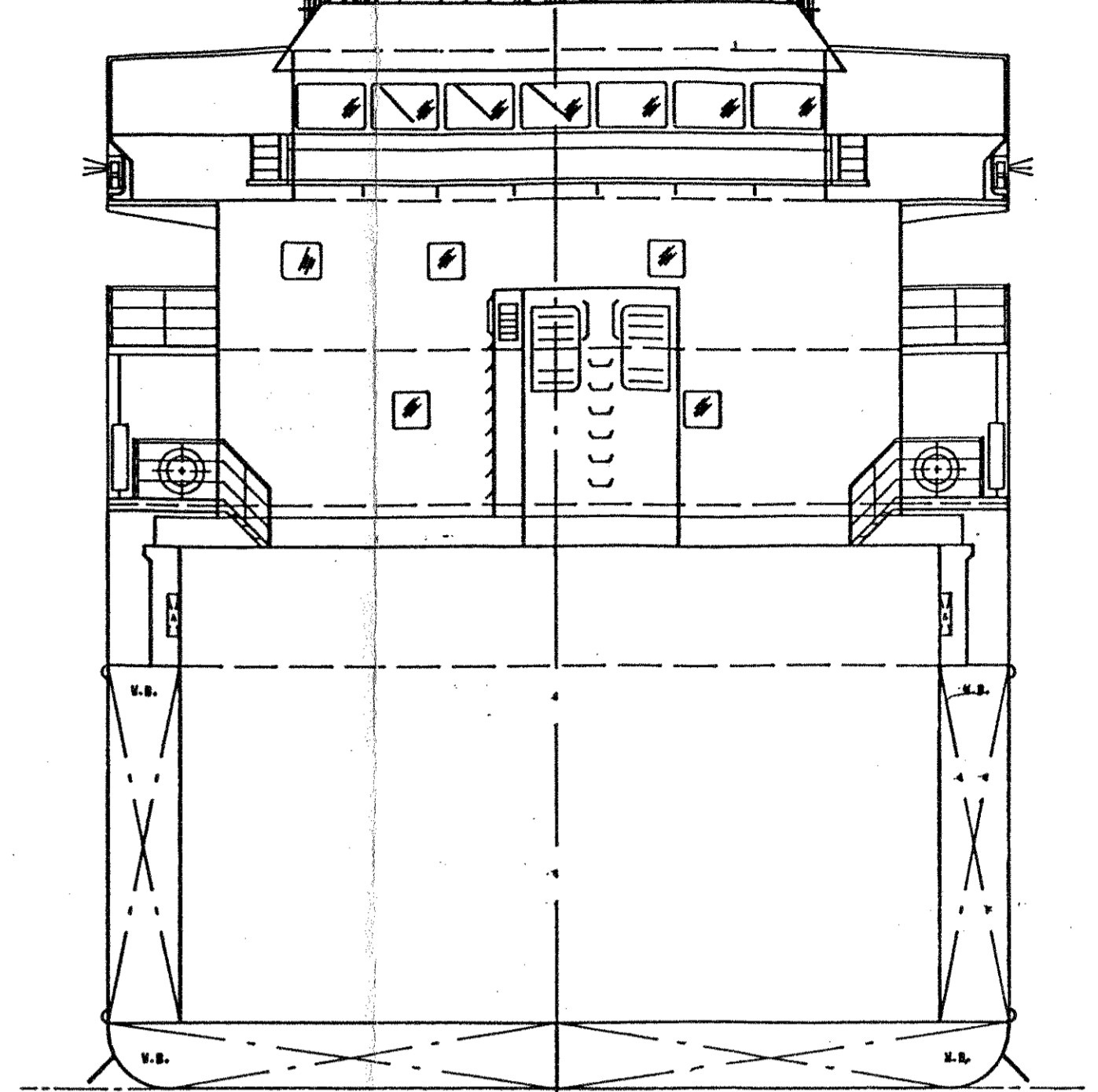
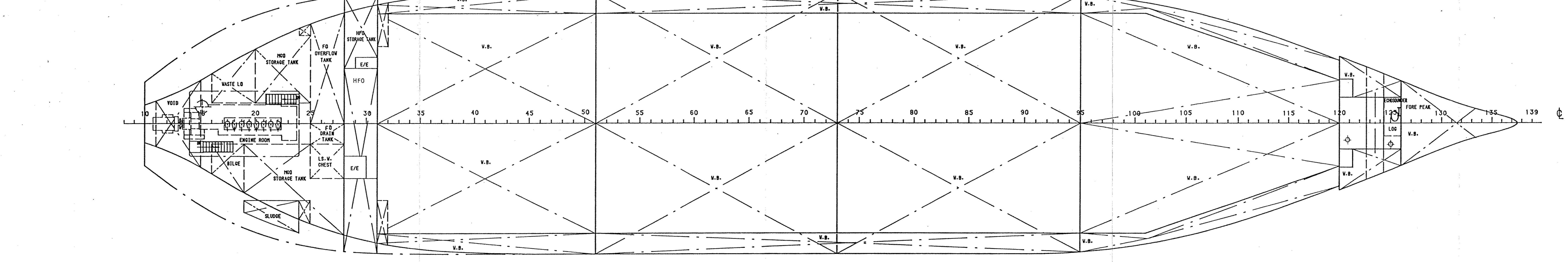
MAIN DECK



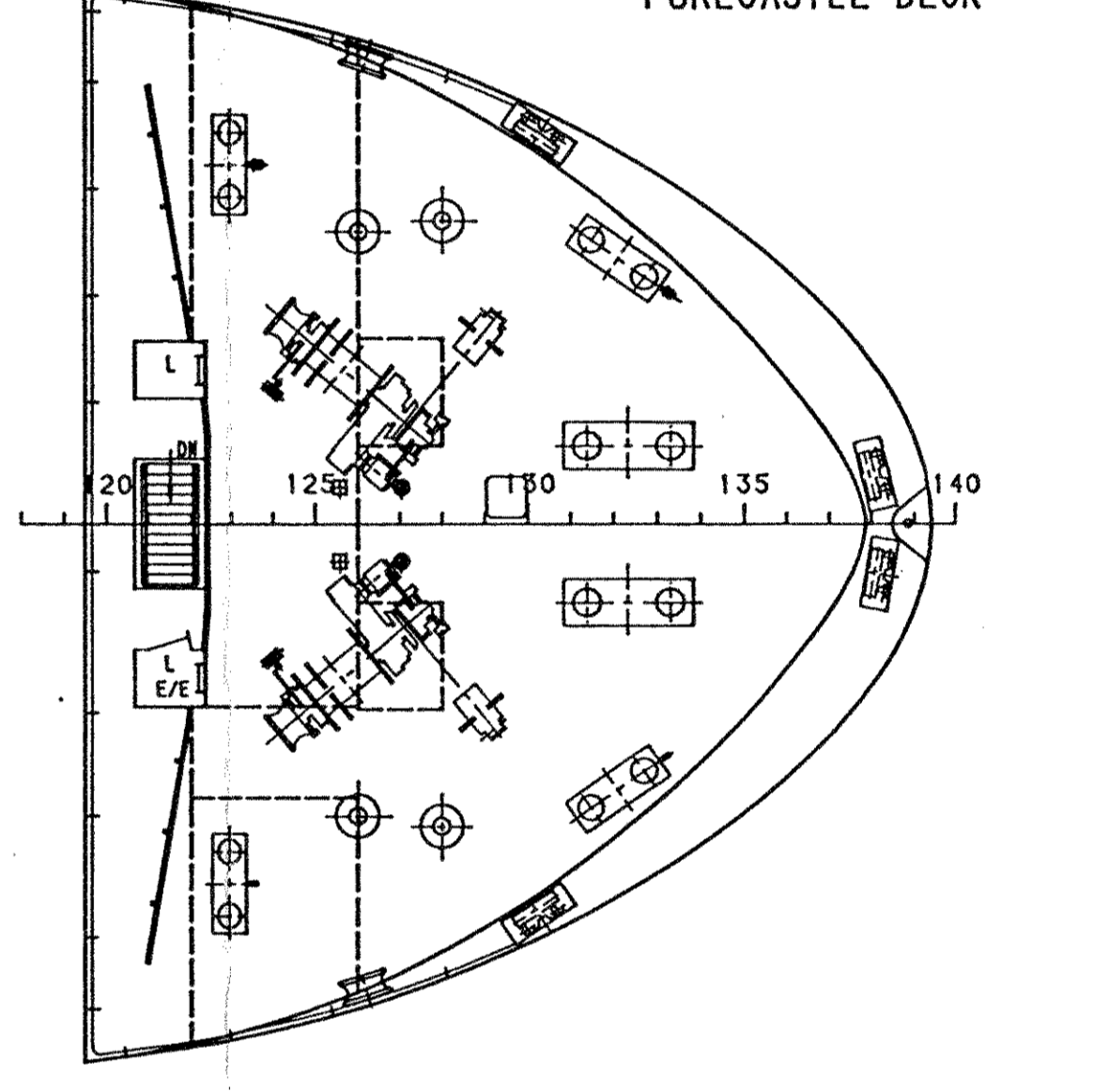
BELOW MAIN DECK



TANKS



FORECASTLE DECK



MAIN PARTICULARS

|   |                     |
|---|---------------------|
| LENGTH B. P. P.                         | 90.25 m             |
| BREADTH MLD.                            | 24.80 m             |
| DEPTH                                   | 15.20 m             |
| DRAUGHT (summer)                        | 7.10 m              |
| DEADWEIGHT AT DRAFT 5.64 m              | 5.64 m              |
| SEA ENDURANCE                           | 4247 t              |
| LOAD CAPACITY                           | 20 days             |
| CRUISING RANGE                          | 5567 m <sup>3</sup> |
| SHIP'S SPEED                            | 5600 nautical miles |
| GROSS TONNAGE                           | 12.3 knots          |
| ONE DIEZEL ENGINE TYPE 8H25 MAK MOTOREN | 3037                |
|   | 2400 kW             |

CLASS OF SHIP  
 ACC. TO GERMANISCHER LLOYD  
 \*100AS E1 G  
 \*Strengthened for heavy cargo\*  
 \*Equipped for dangerous goods\*  
 \*Equipped with AHIS\*  
 \*MC AUT E1

FOR YARD NB 1004

|         |         |         |
|---------|---------|---------|
| Имя     | Имя     | Имя     |
| Фамилия | Фамилия | Фамилия |
| Подпись | Подпись | Подпись |
| Дата    | Дата    | Дата    |

4250 t DW MULTIPURPOSE  
 CARGO SHIP  
 897.3-050-3  
 GENERAL  
 ARRANGEMENT  
 1:100  
 Contract design  
 SHIPYARD J.S.C.