

ANTJE K.



Bereederungsgesellschaft
Alstership



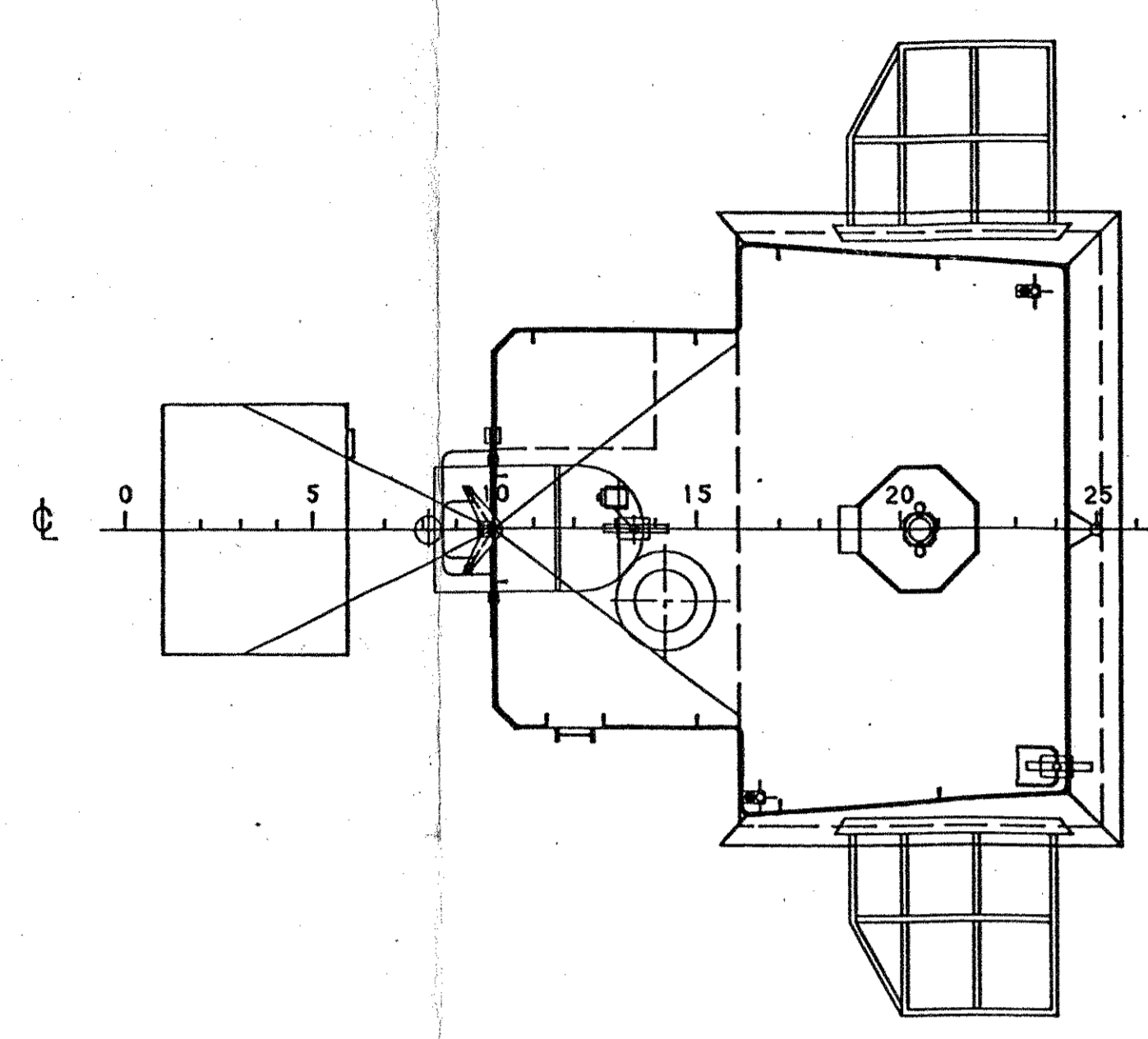
Type	Boxshaped Singledecker	IMO number	9198630
DWAT	4247 mtons sfb	Call sign	PBHS
DWCC	4000 mtons sfb	Flag	Dutch
Cubic	196.700 cbft grain	Port of registry	Delfzijl
Hatch - 1 (LxB)	52,65 x 12,80 m	Built	07/2002
Hatchcovertype	Pontoons (10)	Yard	Rousse Shipyard
Hold - 1 (LxBxH)	56,80 x 12,80 x 8,00 m	Classification Society	DNV
Hold Ventilation	6 air changes per hour	P&I Club	Hydor AS
Tanktop	Steel - 15,0 mtons/sqm	H&M Insurers	KRAVAG-LOGISTIC
Bulkheads	2 with 5 positions	Engine	MAK 8M25
GT / NT	3037 / 1503	Power	2400 kW
LOA / Beam	90,25 / 15,20 m	Auxiliary Engines	1 x 85 kW & 2 x 239 kW
Draft - fully laden	5,64 m sfb	Shaft Generator	Yes
Airdraft - in ballast	23,00 m	Bowthruster	220 kW
Distance WL to HC	5,50 m	Rudder	Spade
Speed	abt. 10,0 knots	Propeller	CPP

All details are 'about' and believed to be correct but without guarantee

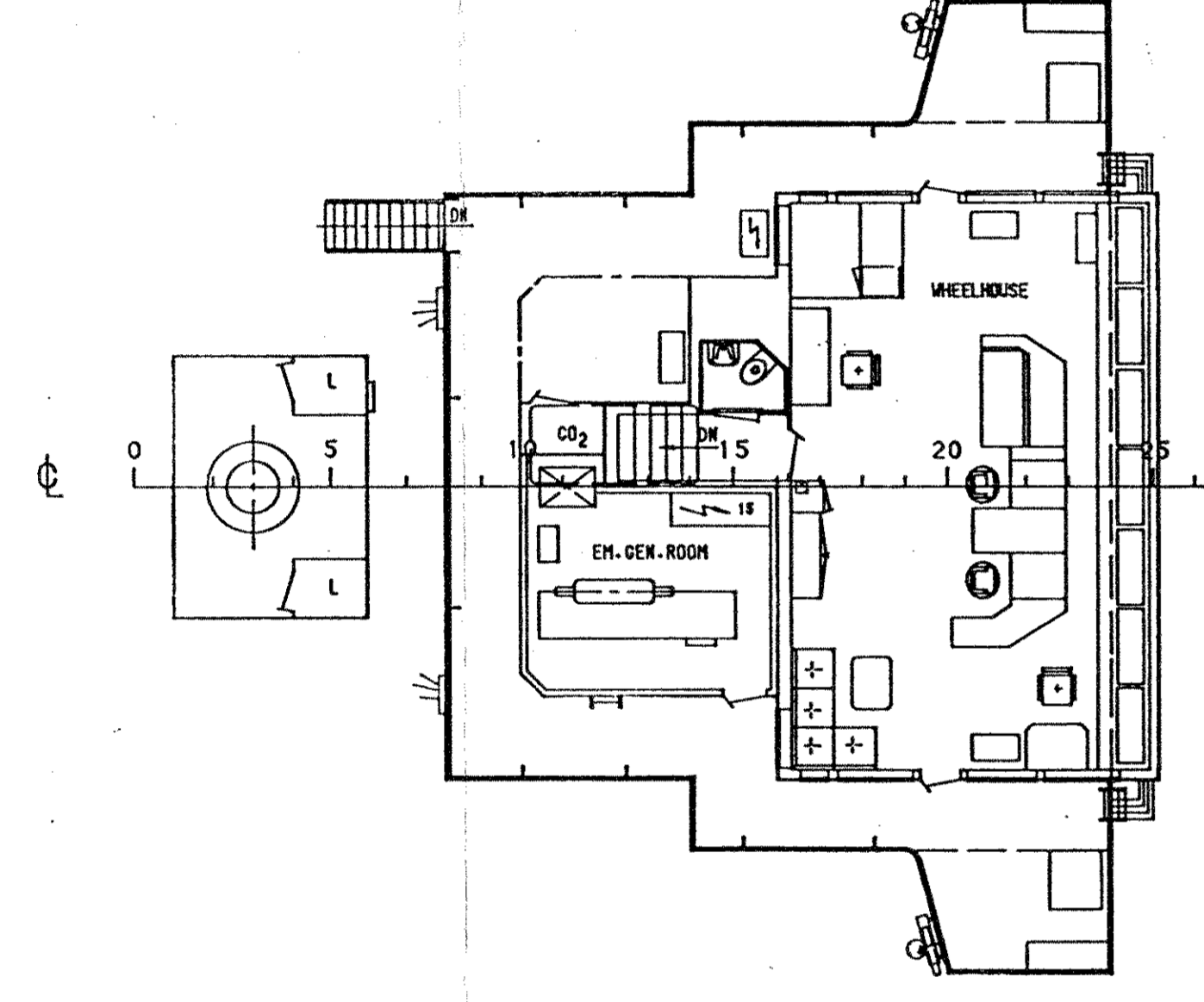
www.b-as.de

Имя	Имя	Имя
Фамилия	Фамилия	Фамилия
Подпись	Подпись	Подпись
Дата	Дата	Дата

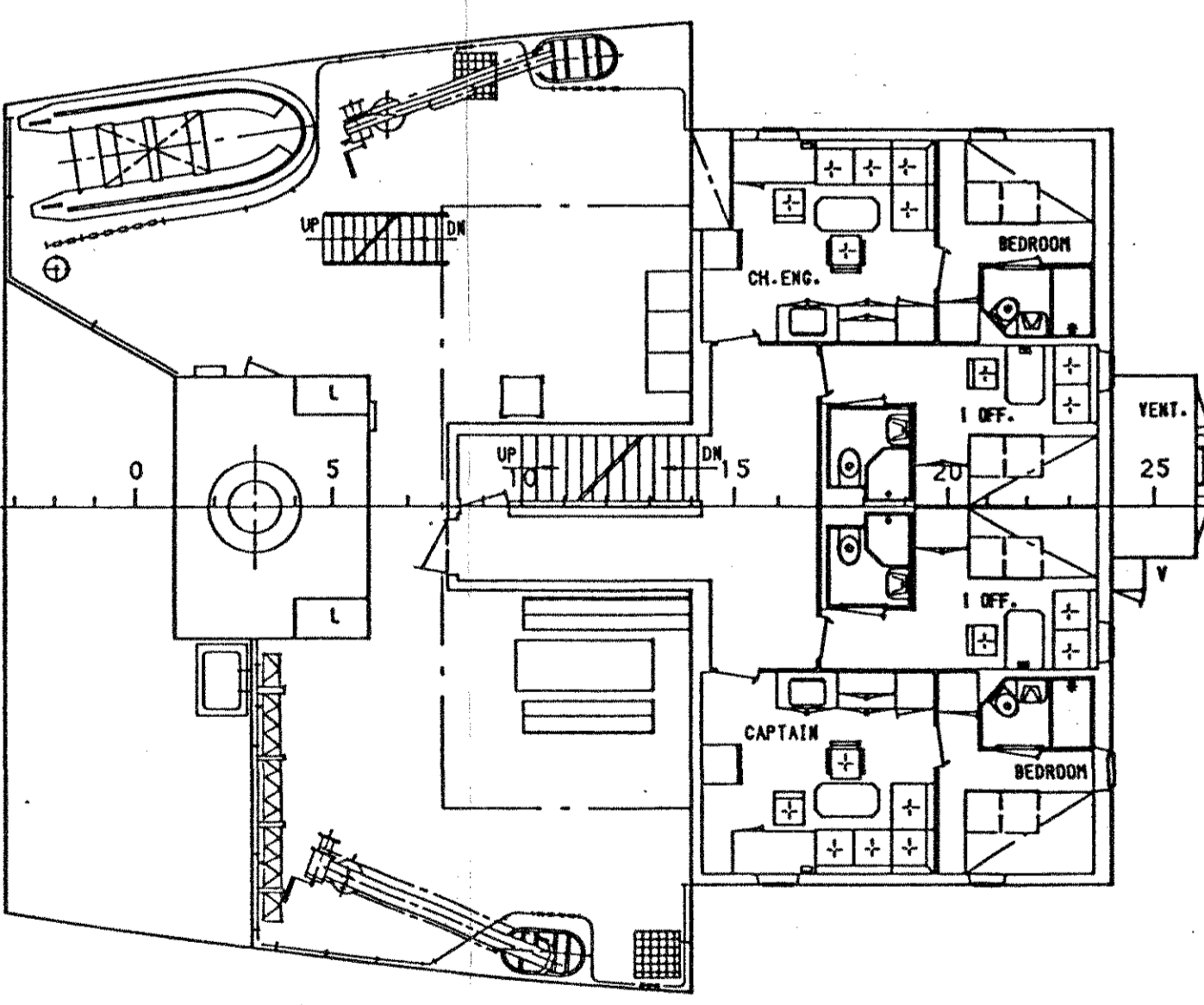
BRIDGE TOP



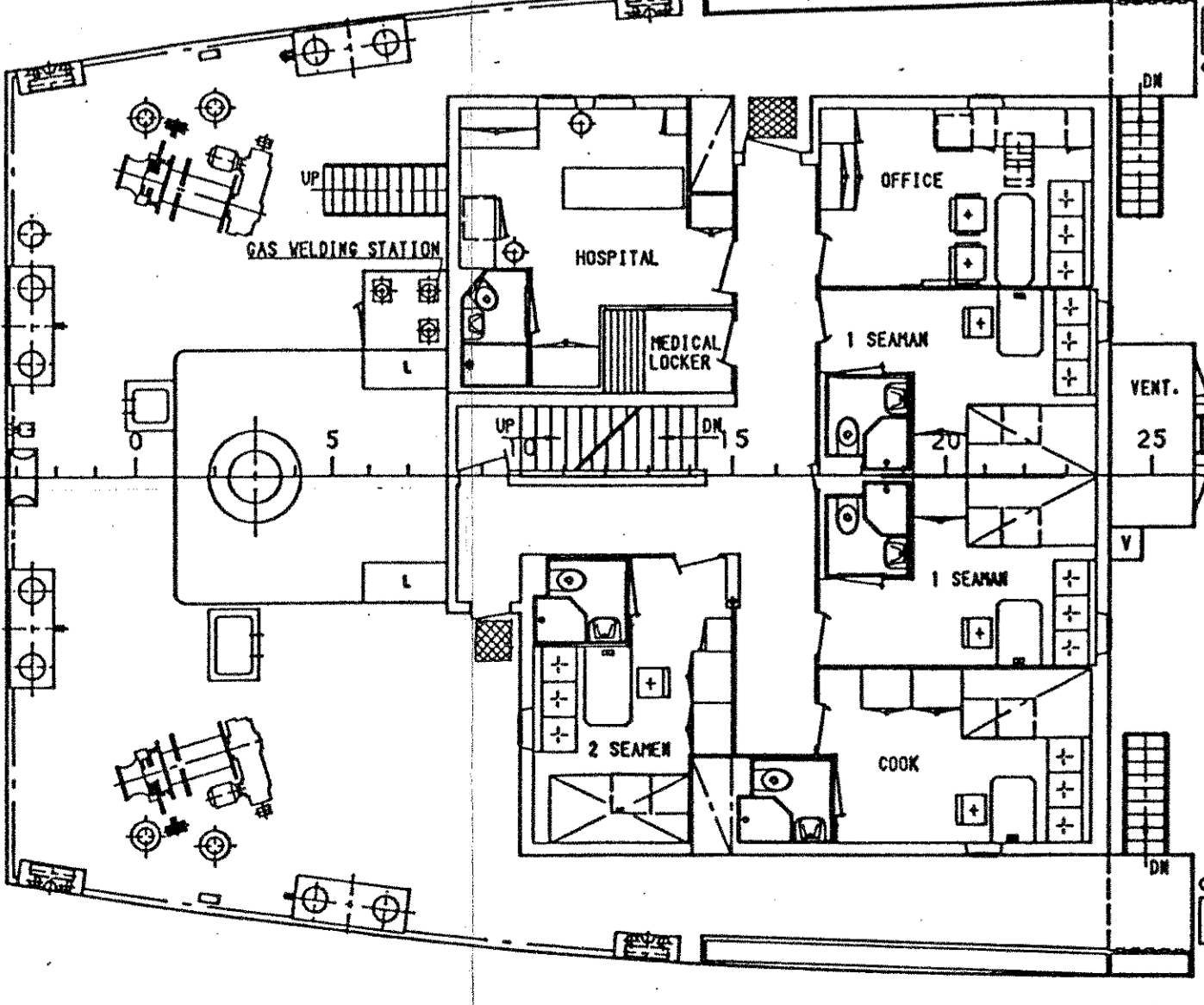
BRIDGE DECK



2nd POOP DECK



1st POOP DECK



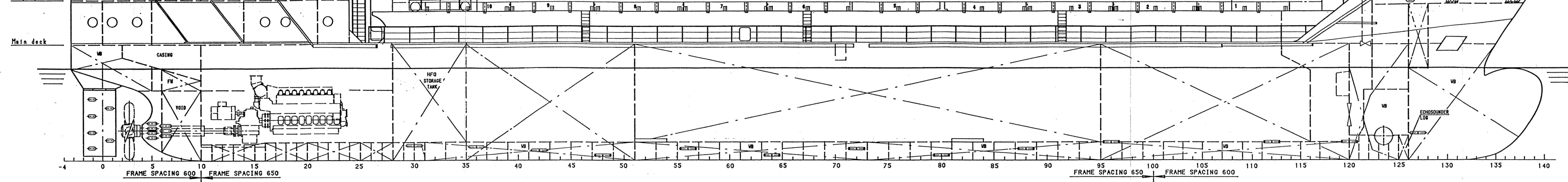
Bridge top

Bridge deck

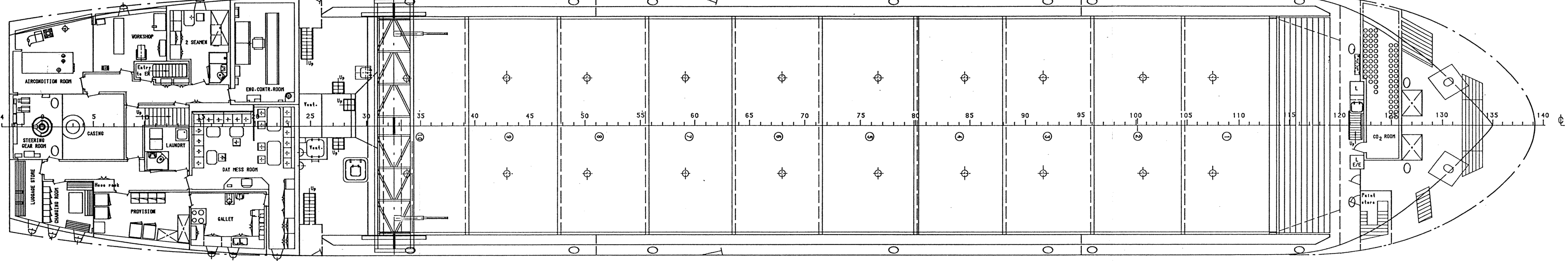
2nd poop deck

1st poop deck

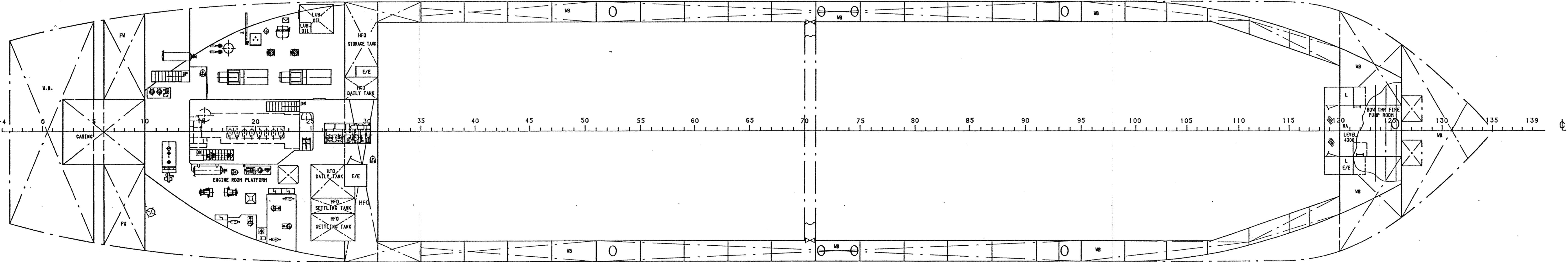
Main deck



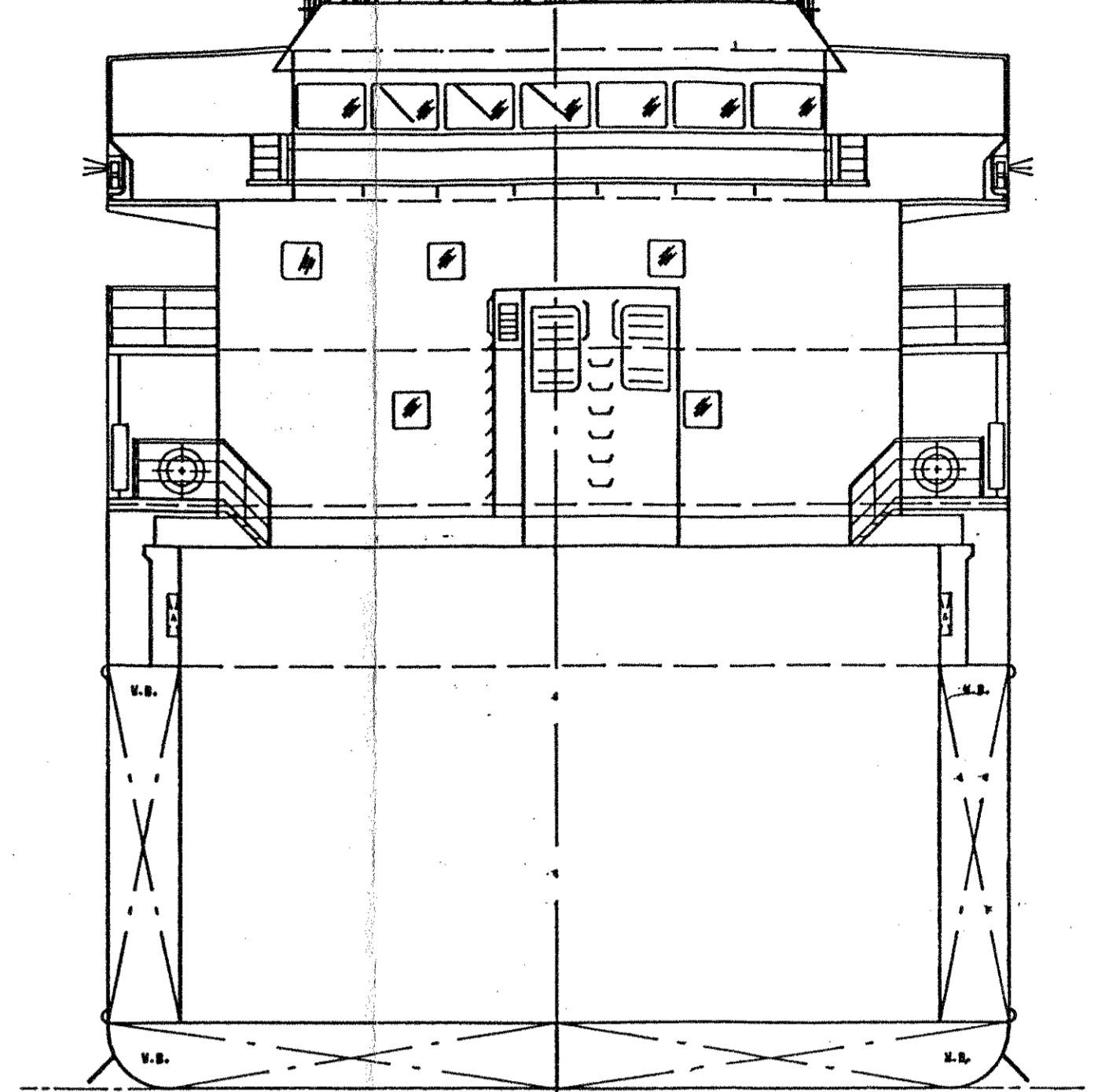
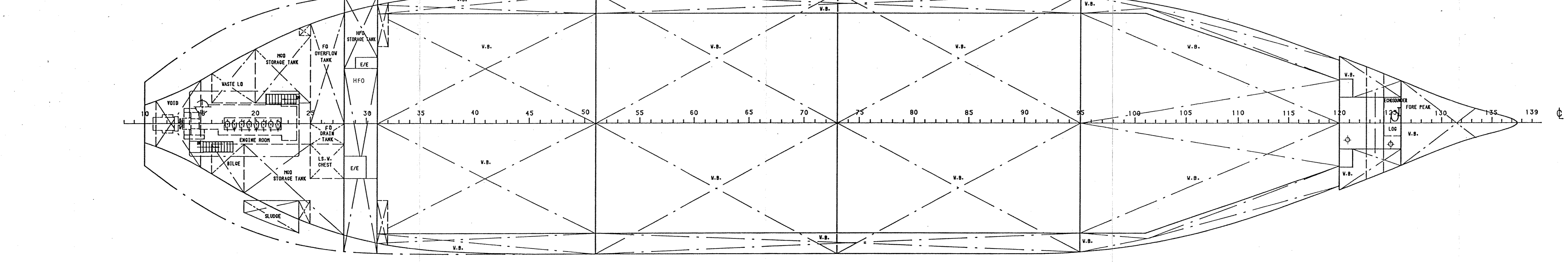
MAIN DECK



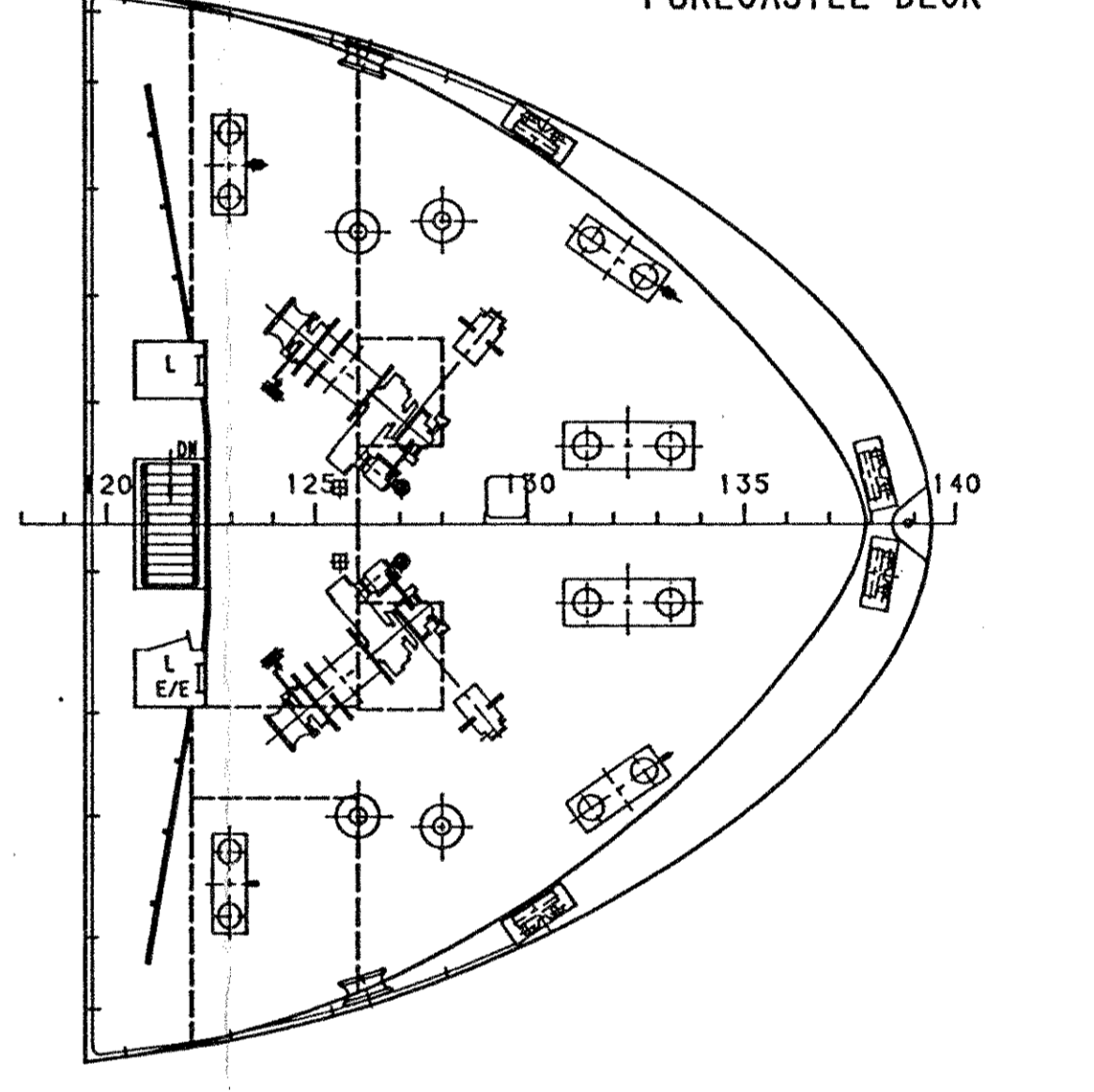
BELOW MAIN DECK



TANKS



FORECASTLE DECK



MAIN PARTICULARS

LENGTH B. P. P.	90.25 m
BREADTH MLD.	24.80 m
DEPTH	15.20 m
DRAUGHT (summer)	7.10 m
DEADWEIGHT AT DRAFT 5.64 m	5.64 m
SEA ENDURANCE	4247 t
LOAD CAPACITY	20 days
CRUISING RANGE	5567 m ³
SHIP'S SPEED	5600 nautical miles
GROSS TONNAGE	12.3 knots
ONE DIEZEL ENGINE TYPE 8H25 MAK MOTOREN	3037
	2400 kW

CLASS OF SHIP
 ACC. TO GERMANISCHER LLOYD
 *100AS E1 G
 Strengthened for heavy cargo
 Equipped for dangerous goods
 Equipped with AHIS
 *MC AUT E1

FOR YARD NB 1004

Имя	Имя	Имя
Фамилия	Фамилия	Фамилия
Подпись	Подпись	Подпись
Дата	Дата	Дата

4250 t DW MULTIPURPOSE
 CARGO SHIP
 897.3-050-3
 GENERAL
 ARRANGEMENT
 Contract design
 SHIPYARD J.S.C.